



Weekly Family Newsletter

Monday 26th June 2023

www.halfwaynurseryinfantschool.org

Caring, Sharing, Learning for Life.



Attendance for the week ending 23rd June 2023

Class	Attendance (%)
Miss Clewes	76.7
Mrs Hibberd	91.3
Mrs Thorpe	87.4
Miss White	91.7
Miss Hughes/Mrs Bettinson	83.1
Mrs Timmons	96.3

Whole school attendance = 87.8%

Learners of the week

Congratulations to all of our learners of the week, who were:

Gruffalos -Evie-Rose and Reuben
Elmers—Ophelia and Cora
Hungry Caterpillars - Polly and Harmony
Rainbow Fish - Florence and Alfie G
Enormous Crocodiles - Jacob and Amelia
Crafty Chameleons - Johann and Harvey

Office Opening Hours

The **main school office** is open each day from 8am - 4pm, and the phone will be answered within these hours. Outside of these hours you will have the opportunity to leave an answer phone message, which will be replied to, if necessary, when the office is next open.

The **nursery office** closes at 3.45 pm.

The **Superkids mobile number** is 07925197530 and should be used from 3.45pm - 6.00pm.

If your child is unable to attend school for any reason, please ring as early as possible on 0114 248 2360. Choose Option 2.

Please remember:

Every day, your child needs to bring:

- A **sun hat**
- A bottle filled with **fresh water**
- A **rain jacket** (as this is England!)

Please also:

- Dress your child in **clothes that cover and protect the skin**
- Apply **sunscreen** before school

Toilet Training Coffee Morning

Attached to this newsletter are details of a toilet training coffee morning, which will be held in the nursery/Superkids building on **Wednesday 19th July**, starting at 9.15 a.m.

Proposed teacher strike days

As you may be aware, the NEU is proposing two further strike days for their members on **Wednesday 5th July** and **Friday 7th July**. The table below shows how these strike days affect your child's class, should they go ahead. As far as we are aware, the NEU are planning to carry out the strike action and so we advise you to make alternative childcare arrangements for these days if your child's class is affected.

	Wednesday 5th July	Friday 7th July
Nursery	Open	Open
Gruffalos	Open	Open
Elmers	Open	Open
Rainbow Fish	Open	Open
Hungry Caterpillars	Open	Open
Enormous Crocodiles	Open	Open
Crafty Chameleons	Closed	Closed

The RockSteady concert will still go ahead as planned on Friday 7th July. Children from the closed class are invited to come into school for this concert if they are able to (they must be accompanied by an adult).

Educational Trips reminder

Nursery had a fabulous time last week when they visited Cannon Hall Farm! This week our children in Reception (Elmers and Gruffalos) will be off for a fun-filled day at The Butterfly House. Please remember to arrive at school promptly, as we are hoping to set off as close to 9am as possible. Children will need to wear school uniform and make sure that they have brought a packed lunch unless they have ordered a lunch from school. The weather forecast is currently for sunshine and rain, so please make sure that children have a sunhat, sun cream and a coat!

Please ensure that you have given consent for your child to attend their educational trip. Payments towards the trips can continue to be made through www.hnipay.co.uk.

Vocabulary Parade

It was wonderful to see the children come to school in such creative outfits for our 'Vocabulary Parade' last week on National Writers Day. The day was filled with lots of learning that focused on writing and vocabulary, and ended with an amazing Vocabulary Parade! A big thank you to all our families who got creative for the day, and to Mrs Timmons, our English lead, who organised the event.

Class Photographs

Tuesday 27 June

The photos are taken during the school day, so parents/carers of children in school do not need to take any action. However, we would ask that all children attend school in their school uniform on that day. Children who have PE on a Tuesday will have a modified PE lesson in their school uniform, so do not need to bring a PE kit with them.

Our nursery has two photo sessions, one in the morning and one in the afternoon, and the sessions are blended into one photo. If your child doesn't attend nursery on a Tuesday, but you would like them to be in the photo, please bring them to Nursery for 1.30 pm that afternoon. Nursery staff will take your child to have their photo taken. Once the photo has been taken, you will be able to take your child home. If your child usually attends for an afternoon session on this date please bring them for the normal 12.30pm time.



Get ready for
Photography Day
tomorrow

Look out for the order form
coming home with your child

 School
Photography
Company

www.schoolphotographs.co.uk

Sports Day - reminder

This year Sports Day will be held on **Thursday 13th July**. As before, we are working with Neil Francis and the Sports Leaders from Westfield, who help to organise and run the event, and always make sure that our sports days are fun for all.

Please see the times below for each year group's turn. Parents are welcome to come and watch the event. We will keep you informed of any updates and changes, including plans if it rains.

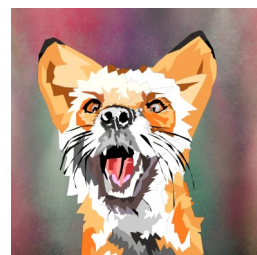
9:10am - 9:40am = F2

9:50am - 10:50am = Year 1

11:00am - 12:00pm = Year 2

Competition!

Ruby, the 'Little Urban Fox' is off on another adventure. This time she is going to Bakewell, looking for a tasty treat to take home to her mother for her birthday. Ruby needs your help to design a cupcake for her mum. You can use any ingredients that you like, from strawberries to worms, to chocolate chips to beetles! Children need to use the template to design their cupcake and write a list of ingredients. The winner will have their cupcake design featured in the book, and will also appear in the story as a character and receive a certificate and copy of the new book "The Little Urban Fox Explores Bakewell". Runners up will also have their names and designs included in the book and receive a certificate and a copy of the book.



To enter, please design your cupcake and write out the ingredients on the template (attached to this newsletter), and hand them into the school office **before 17th July**. If you are unable to print the template, and would like to take part, spare templates will be available in the school office.

Nursery hours and Superkids update

From September 2023 the charge for additional nursery hours to be £4.69 per hour. This amount brings our charge in-line with the FEL (Funded Early Learning) funding we receive from the government for children's 15 or 30 free hours, and is necessary due to rising staffing and utility costs. This increase will affect the nursery lunch cost of children that stay for a full day, and are only entitled to 15 hours of FEL. The cost for a hot meal, and the one hour child care, will be £6.44—or £4.69 if your child brings a packed lunch from home. **These charges will only apply for additional hours over and above any funded hours you can claim.**

From September 2023, the charge for the Superkids service will be £8.50 (a rise of 25p). This rise in cost reflects the rise in energy bills, staffing costs and food prices, and is in-line with charges made by other local schools. The 10% sibling discount will still be available, where siblings will be charged £7.65 each.

HIP Group News

We have loved seeing all your sunflowers growing over the last few months. Thank you for putting them on Tapestry, Facebook and the WhatsApp Groups for us to see.

It's now time to choose a winner from each class. Please can you send a picture of your sunflower to hipgroup@halfway-inf.sheffield.sch.uk with your child's **initials**, **class name** and the **height of the sunflower**, by **Friday 30th June**.

The winners from each class will be announced on **Monday 3rd July**. Good luck and we can't wait to see the entries!

Upcoming dates

The last few weeks of term are busy across school. To help you, please see the table of dates that we have created, which we hope will help to keep track of what is happening, and when.

Date and time	Event
27 June, Tuesday	Class group photograph day—nursery and school. Children who have Big PE today should wear their school uniforms please —they do <u>not</u> need to bring their PE kits on photo day.
28 June, Wednesday, 8.55am	F2 Educational Visit to Tropical Butterfly House Wildlife Conservation Park, North Anston
3 July, Monday 3.45—4.15pm OR 4.15—4.45pm	New to F2 in September: One half-hour session, either today or on Wednesday, for you and your child to visit their new indoor and outdoor classrooms.
4 July, Tuesday, 8.30am—3.45pm	Y2 Educational Visit to Chatsworth Gardens, Farmyard and Adventure Playground. Please note late return to school
5 July, Wednesday 3.45—4.15pm OR 4.15—4.45pm	New to F2 in September: One half-hour session, either today or on Monday, for you and your child to visit their new indoor and outdoor classrooms.
w\b 10 July	Reports to be sent home
10 July, Monday	Junior School Year 3 staff to visit our school and spend time in class with our Year 2 children.
11 July, Tuesday	Halfway Transition Day. Children staying at the Infants will move to their next year group in our school, and Y2 children moving to Halfway Junior School will spend the day there.
13 July, Thursday F2 sports event: 9.10 — 9.40am Y1 sports event: 9.50 — 10.50am Y2 sports event: 11.00—12.00 noon	Sports Day (not nursery): Each year group will have its own age appropriate Sports Day session lasting for up to 60 minutes. The events have been organised by sports leaders and coaches from Westfield Comprehensive School and sessions will take place on the school field. Please can parents/carers stand behind the fence/wall on the yard (around the field) and only enter the school grounds 5 minutes before your child’s start time. As all year groups’ events will be running back to back, this will ensure that there is a smooth switch-over of adults at the end of each session.
15 July, Saturday	Y2 Prom—organised by parents
18 July, Tuesday, 8.55am	Y1 Educational Visit to Magna Science Adventure Centre, Rotherham
18 July, Tuesday (one in the morning, one in the afternoon: times to be arranged)	Nursery Leavers Graduation Ceremony , to say goodbye to children who are moving on. Sign up sheet available soon (2 people per child) Children due to stay with us for another year to attend Nursery as normal.
19 July, Wednesday, 9.15am	Toilet Training coffee morning, in the Nursery meeting room
19 July, Wednesday	Nursery Sports Day - for children only
20 July, Thursday, 9.00am	Special Y2 Celebration —parents are welcome to attend (we are planning to be outdoors, but if the weather is inclement, we will move to the hall!)
20 July, Thursday	Nursery End of Term Party
21 July, Friday	Last day of school—school and nursery break up for the summer holiday at the usual time/s

There will be an opportunity to order school tea towels and coasters towards the end of term, but we don’t have a date for this yet. Please look out for emails and texts giving you the information you need. The tea towels and coasters will be available to collect from us or Halfway Junior School in September.

The Little Urban Fox Explores Bakewell Series 2 Book 2.

Ruby is looking for a tasty treat to take home to her mother for her birthday.

Ruby needs your help to design a cupcake for her mother. You can use any ingredients you like, from strawberries to worms chocolate chips to beetles, the choice is yours.

Just draw the top and middle of your cupcake on the other side of this paper and the ingredients you have used below

Cupcake ingredients:

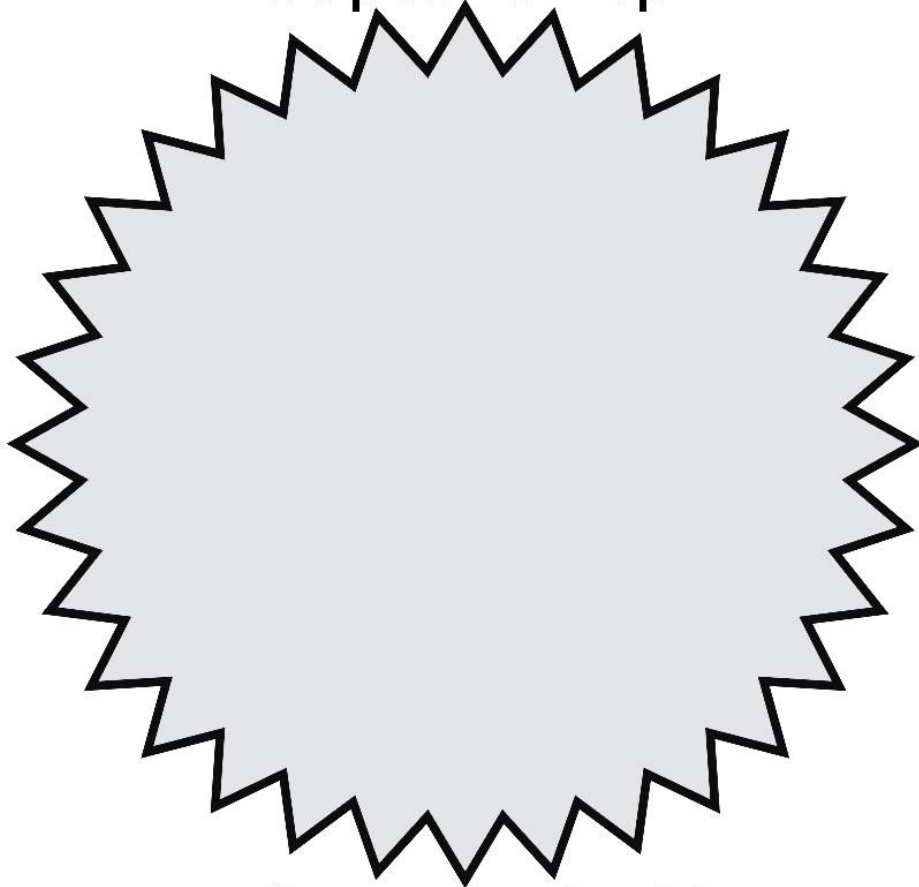
The winner of our competition will have their cupcake design included in our book, they will also appear in our story as a character and will receive a certificate and a copy of "The Little Urban Fox Explores Bakewell". Runners up will have their names and designs included, and will receive a certificate and a copy of the book.

Thank you for your help, happy designing.

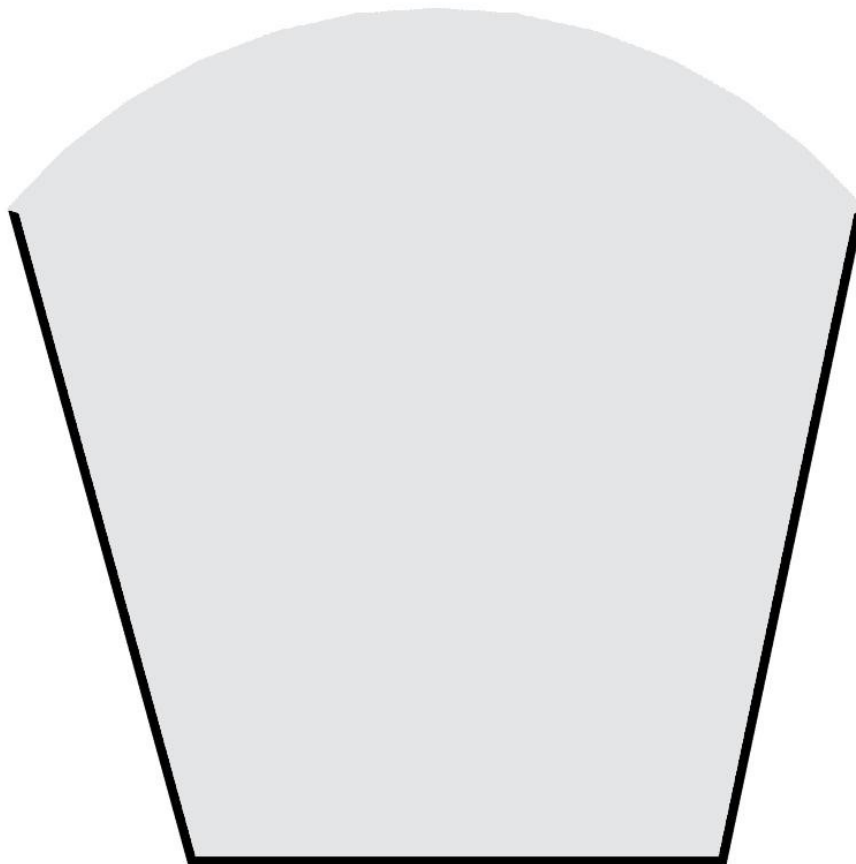
www.littleurbanfoxandfriends.co.uk
Email: mail@littleurbanfoxandfriends.co.uk



Cupcake Top



Cupcake Inside



FamilyFirst

**Helping millions of families stay
bored-free this summer**

It's 100% FREE for all parents- Enjoy!

https://issuu.com/sevenstarmedia/docs/ff_summer2023_digital160623

- Free Family Days Out ✓
- Family Travel ✓
- The Great Outdoors ✓
- What's On This Summer ✓
- Parenting Hacks ✓
- Children's Fashion ✓
- Healthy Recipes ✓
- Toys & Games ✓
- Children's Sport ✓



ASD Information Café Drop In Mornings

**Help
Support
Advice
Information**

Come along to these informal mornings to have a coffee and chat with other parents and meet staff from Sheffield Children's Hospital, Ryegate, Sheffield City Council and Parent Carer Forum



**Friday 23rd June 2023
9:30am - 12pm**

Diagnosis not needed
Adults only for attendance

**Sharrow Community Forum,
Community Room**



South View Road
Sheffield
S7 1DB

For any queries, contact Sheffield Family Centres on 0114 273 5665

**Sheffield
parent
hub** 
for every family

Sheffield Children's
NHS Foundation Trust

NHS

**Sheffield
family
hubs & Start
for life**



ADHD Parent and Carer Information Café Drop-In Mornings

**Help
Support
Advice
Information**

Come along to these informal mornings to have a coffee and chat with other parents and meet staff from Sheffield Children's Hospital, Ryegate, Sheffield City Council and Family Action

 **Lowedges Community Centre**
Gresley Road
Sheffield
S8 7HN



Session from 9:30am-12noon

Tuesday 18th July 2023

Tuesday 19th September 2023

Diagnosis not needed

For any queries, contact Sheffield Family Centres on 0114 273 5665



Building
stronger
families

Sheffield
family
hubs & Start
for life

Sheffield Children's
NHS Foundation Trust



ADHD Parent and Carer Information Café Drop-In Mornings

**Help
Support
Advice
Information**

Come along to these informal mornings to have a coffee and chat with other parents and meet staff from Sheffield Children's Hospital, Ryegate, Sheffield City Council and Family Action



Sharrow Community Forum
South View Road
Sheffield
S7 1DB



Session from 9:30am-12noon

Friday 14th July 2023

Diagnosis not needed

For any queries, contact Sheffield Family Centres on 0114 273 5665



Building
stronger
families

Sheffield
family
hubs & Start
for life

Sheffield Children's **NHS**
NHS Foundation Trust

